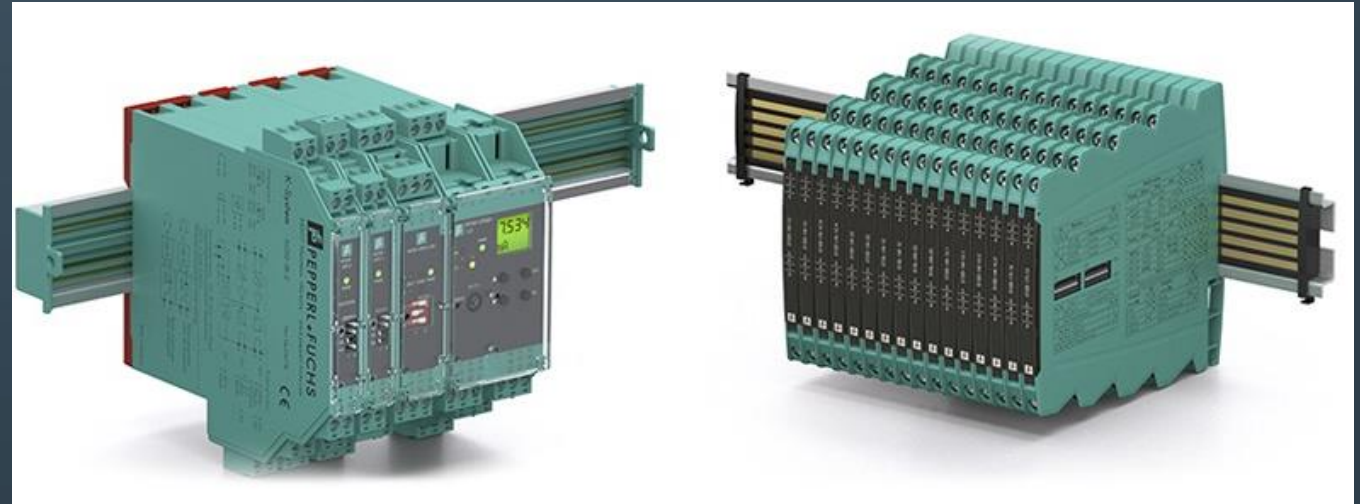
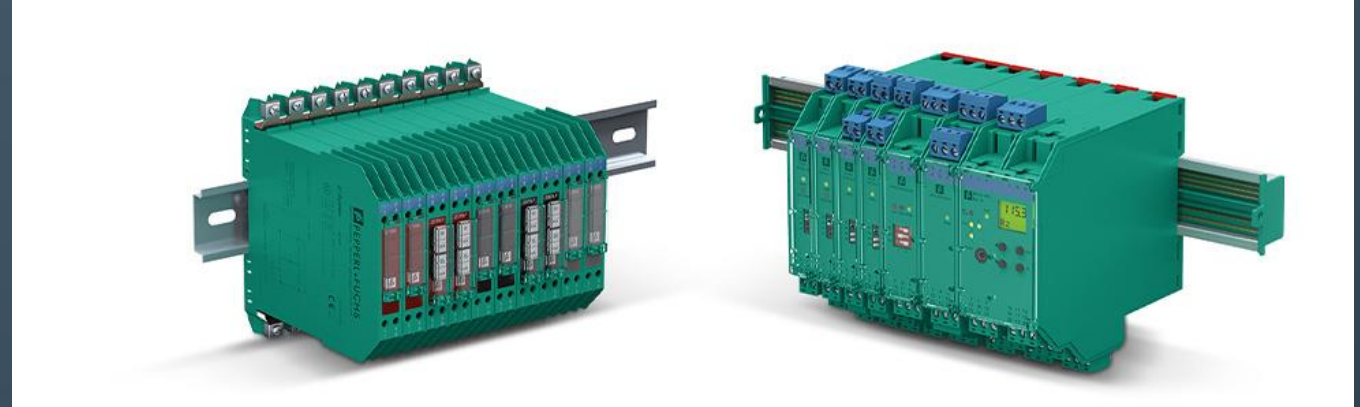
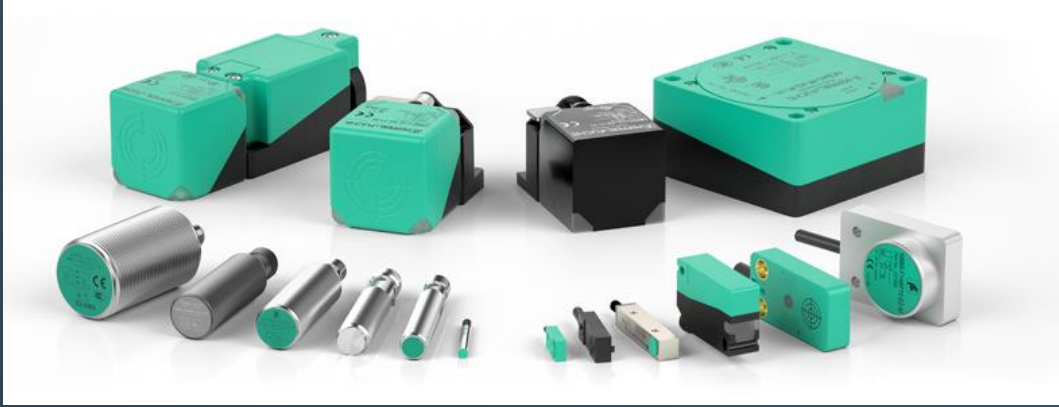


We provide the best prices and delivery terms for all P+F equipment:

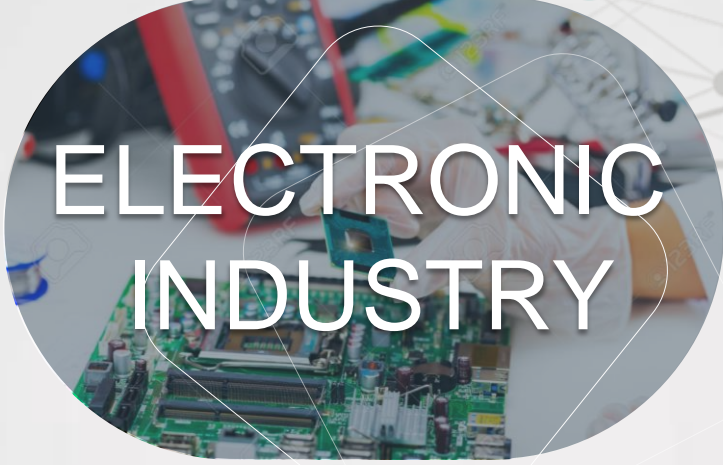




# INDUSTRIES & APPLICATIONS

A circular image showing a close-up of several stacked cardboard boxes. Some boxes have recycling symbols and handling instructions like 'fragile' and 'this side up' printed on them.

PACKAGING  
INDUSTRY

A circular image showing a person's hands using a pair of tweezers to place a small electronic component onto a green printed circuit board (PCB).

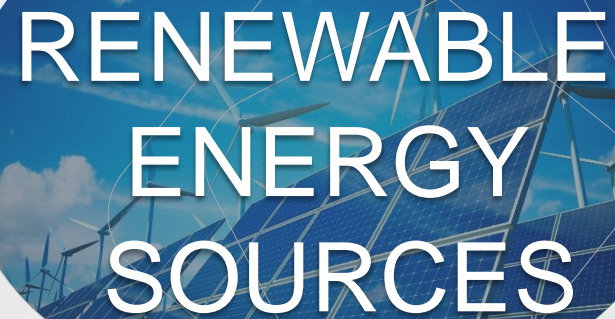
ELECTRONIC  
INDUSTRY

A circular image showing a yellow forklift in a warehouse, lifting a large, heavy load of white sacks or bags secured with red and blue straps.

MATERIAL  
HANDLING

A circular image showing a worker in a blue shirt and cap operating a large industrial printing machine. A printed sheet with a colorful pattern is visible.

PRINTING  
INDUSTRY

A circular image showing a landscape with solar panels in the foreground and several wind turbines in the background under a blue sky with clouds.

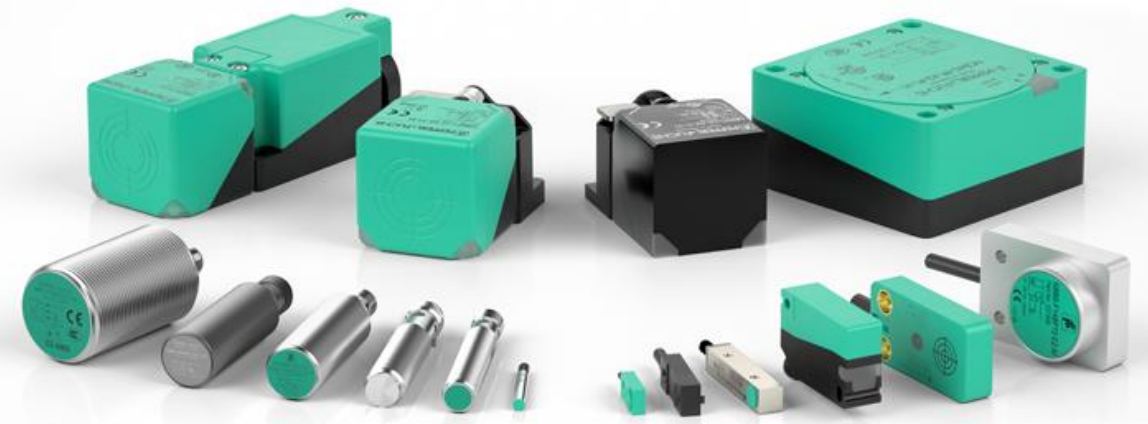
RENEWABLE  
ENERGY  
SOURCES

A circular image showing a yellow bulldozer or similar heavy construction equipment operating on a dirt and gravel site.

MOBILE  
EQUIPMENT

# INDUCTIVE PROXIMITY SENSORS

- The largest selection of global certifications
- Sensors for all supply voltages and output signals — discrete, analog, IO-Link, AS-Interface, NAMUR
- Complete range of cable and connector types
- Sensing ranges up to 100 mm





# INDUCTIVE PROXIMITY SENSORS



Proximity switch with  
"Metal Face"



Inductive analog  
output sensors



Bus-enabled  
proximity switches



Pressure-resistant  
proximity switches



Proximity switches with  
increased switching distance



Proximity switches for  
valve actuators

# INDUCTIVE PROXIMITY SENSORS



Ring proximity switches



Proximity switches with protection category IP69k



Slotted proximity sensors



Proximity sensors



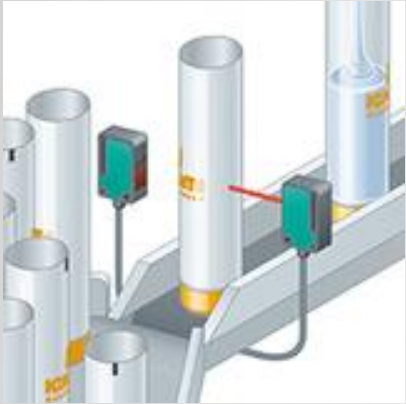
Proximity switches with safety function

# PHOTOELECTRIC SENSORS

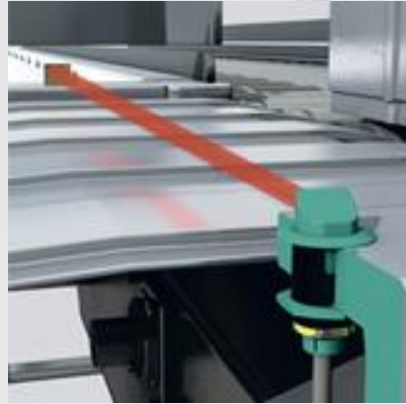
- Complete portfolio of sensing modes available: thru-beam, retro reflective, diffuse mode
- A variety of light sources (red light, infrared, and laser)
- Comprehensive accessories
- Environmental protection up to IP69K



# PHOTOELECTRIC SENSORS



Thru-Beam Sensors



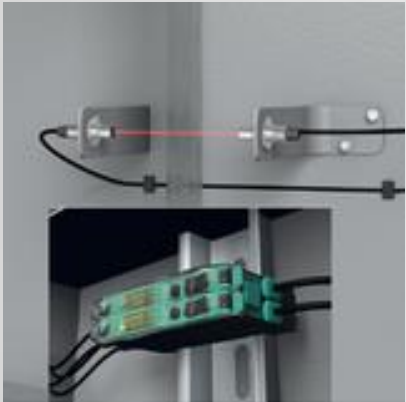
Retroreflective  
Sensors



Diffuse Mode  
Sensors



Switching Sensors



Fiber Optic Sensors



Slot and Slot  
Grid Sensors



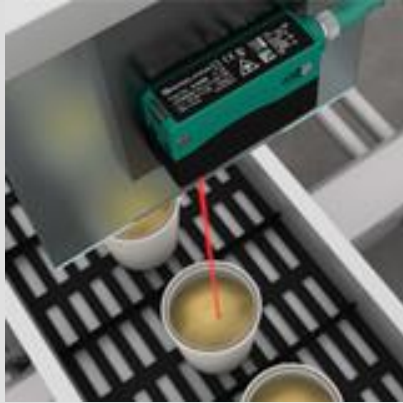
Ring proximity  
switches



Ring proximity  
switches



# PHOTOELECTRIC SENSORS



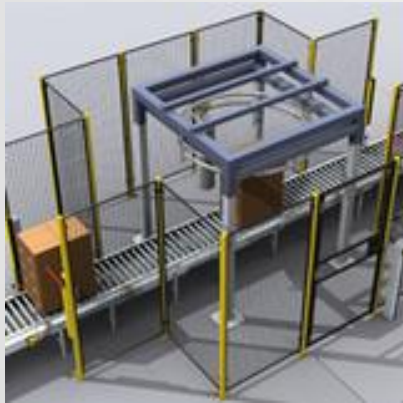
Distance Sensors



Optical Data  
Couplers



Special Sensors



Photoelectric  
Safety Sensors



Sensors for  
Automated Accesses



Photoelectric Sensor  
Accessories



# INDUSTRIAL SENSORS

Industrial sensors and sensor systems with the highest quality standards for use in automation technology.



# DISPLAYS & SIGNAL PROCESSING



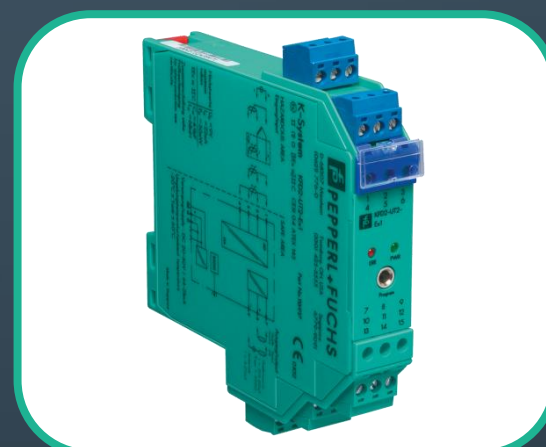
Pulse Counter Units & Displays



Process Displays



Signal Converters



Switch Amplifiers

# INDUSTRIAL COMMUNICATION



Vision Sensors



Light Section Sensors



Vision Systems



# INDUSTRIAL VISION



Vision Sensors



Light Section Sensors



Vision Systems

# ROTARY ENCODERS

Rotary encoders can be used in all applications that require monitoring rotation rate, speed, acceleration and direction



# ROTARY ENCODERS



Absolute Rotary Encoders



Incremental Rotary Encoders



Cable Pulls



# ULTRASONIC SENSORS

Ultrasonic sensors can be used to solve even the most complex tasks involving object detection or level measurement with millimeter precision



# ULTRASONIC SENSORS



Thru-Beam Sensors



Diffuse and Retroreflective  
Mode Sensors



Double Sheet Sensors





# IDENTIFICATION SYSTEMS



RFID



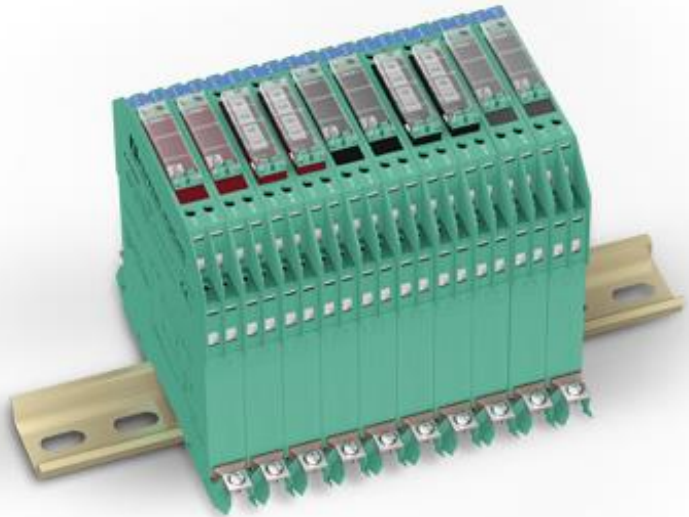
Optical  
Identification

# INTRINSIC SAFETY BARRIERS

Intrinsically safe barriers limit the energy entering the circuit and protect hazardous areas from excess energy.



# INTRINSIC SAFETY BARRIERS



Zener Barriers



Isolated Barriers



# POSITIONING SYSTEMS



# POSITIONING SYSTEMS



Inductive Position Measuring Systems (PMI)



Position Encoding System (WCS)



Distance Sensors



Data Matrix Positioning System (PXV, safe PXV)



Position Guided Vision (PGV, safe PGV)



Electronic CAM-Switch Controller (PAX)